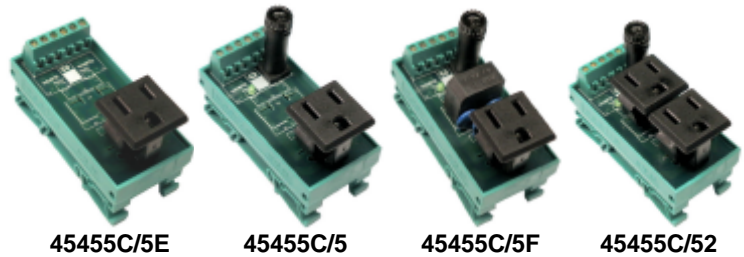


Low cost version. Optional with power indication and fuse, over voltage protection, EMC filter or two sockets

## Features

- Module with power outlet socket. Supplied with AC power through PCB terminals.
- Module has a 5x20mm fuse integrated (except low cost version). The fuse can easily be removed by hand, by turning the fuse holder knob, thus also filling the function of a circuit breaker (breaks the "L" path).
- An integrated LED shows when power is present at the outlets socket.
- Two input terminals are connected in parallel for each path. Makes it easy to loop to other units.
- Economy version available with only terminals and socket (45455C/5E).
- Version available with over voltage protection (45455C/5P). Both common mode (referred to earth) and differential mode (between L and N) are protected.
- Version available with an EMC suppression filter added on the module (45455C/5F). The current is limited to 6.3A. This version also has a differential over voltage protection integrated.
- Version available with two outlets sockets (45455C/52).
- Mountable on 35mm DIN rail

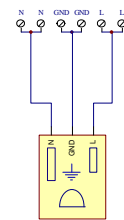


45455C/5E

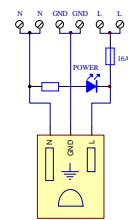
45455C/5

45455C/5F

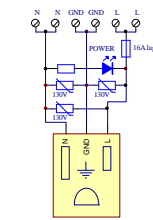
45455C/52



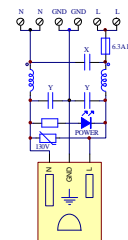
45455C/5E



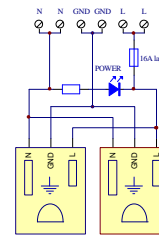
45455C/5



45455C/5P



45455C/5F



45455C/52

## Technical Data (Ta = 25°C)

### Output

Maximum AC voltage  
Maximum current for 45455C/5, 45455C/5P and 45455C/52  
Maximum current for 45455C/5E (no fuse integrated)  
Maximum current for 45455C/5F  
LED

125VAC  
15A (fuse 16A lag)  
15A (must be externally fused)  
6.3A (fuse 6.3A lag)  
green: power on output socket

### General Data

Approval  
Temperature range

CE  
-25°C .. +40°C  
(upper limit can be extended if a lower rated fuse is used)

Nominal cross section of connecting terminals  
Dimensions L x W x H (from the rail)

2.5mm<sup>2</sup> (AWG24-14)  
40x83x62mm

### Order No.

Module without fuse and LED  
Module with fuse and LED  
Module with fuse, LED and over voltage protection  
Module with fuse, LED, EMC filter and over voltage protection  
Module with fuse, LED and two power outlet sockets

**45455C/5E**  
**45455C/5**  
**45455C/5P**  
**45455C/5F**  
**45455C/52**